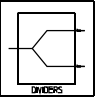


PDM-21(M) Series 0° POWER DIVIDERS / COMBINERS

0.5 to 18 GHz / 2-Way / Uniform Phase & Ampli. Bal. / High Isolation & Low Insertion Loss / SMA



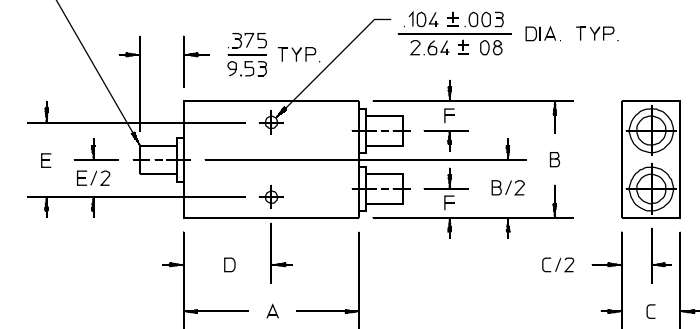
PRINCIPAL SPECIFICATIONS

Model Number	Freq. Range, GHz	Isolation, dB, Min.	Insertion Loss, dB, Max.	Phase Balance, Max.	Amplitude Bal., dB, Max.	VSWR, Max.		CW Input, W, Load VSWR out			Outline Drawing Ref.
						In	Out	1.2:1	2.0:1	∞	
PDM-21M-.75G	0.5 - 1.0	22	0.20	2°	0.2	1.20:1	1.10:1	10	1	0.1	4
PDM-21M-1.5G	1.0 - 2.0	22	0.25	3°	0.2	1.25:1	1.20:1	10	1	0.1	2
PDM-21M-3G	2.0 - 4.0	20	0.30	4°	0.2	1.30:1	1.25:1	10	1	0.1	2
PDM-21M-4G	3.0 - 5.0	20	0.35	4°	0.2	1.30:1	1.30:1	10	1	0.1	2
PDM-21M-6G	4.0 - 8.0	20	0.40	4°	0.2	1.30:1	1.25:1	10	1	0.1	1
PDM-21M-10G	8.0 - 12.4	20	0.50	4°	0.2	1.30:1	1.35:1	10	1	0.1	1
PDM-21M-15G	12 - 18	20	0.60	5°	0.2	1.35:1	1.40:1	10	1	0.1	1

Package Outline

CONNECTOR, RECEPTACLE, FEMALE, SMA TYPE, MATES WITH CONNECTOR, PLUG, MALE PER MIL-C-39012 TYP.

- NOTES:
 1. Tolerance on 3 place decimals $\pm .020(.51)$ except as noted.
 2. Dimensions in inches over mm.
 3. Weights are nominal on all outlines.



OUTLINE	A	B	C	D	E	F	WT. OZ. (G)
1	$\frac{1.000}{25.40}$	$\frac{1.000}{25.40}$	$\frac{.500}{12.70}$	$\frac{.500}{12.70}$	$\frac{.640}{16.26}$	$\frac{.250}{6.35}$.99 (28)
2	$\frac{1.500}{38.10}$	$\frac{1.500}{38.10}$	$\frac{.500}{12.70}$	$\frac{.750}{19.05}$	$\frac{1.310}{33.27}$	$\frac{.250}{6.35}$	1.94 (55)
4	$\frac{1.500}{38.10}$	$\frac{2.500}{63.50}$	$\frac{.500}{12.70}$	$\frac{.530}{13.46}$	$\frac{2.310}{58.67}$	$\frac{.750}{19.05}$	3.00 (85)

GENERAL SPECIFICATIONS

Impedance: 50 Ω nom.
 Operating Temperature: -55° to +85°C

General Notes:

- The PDM-21(M) series of 2-way In-Phase Power Dividers/Combiners covers 500 MHz to 18 GHz in octave bands. Each uses a conventional Wilkinson design which provides high isolation and low VSWR.
- Etched PTFE fiberglass stripline circuits are encased in a miniature machined housing that minimizes moding and provides an effective RF shield.
- These units are generally available from catalog stock for fast delivery.

07/19/10